

**Darwin Initiative/D+ Project**
  
**Half Year Report**
  
 (due 31<sup>st</sup> October 2019)

<b>Project reference</b>	26-011
<b>Project title</b>	Strengthening fisheries resource co-management in PiSiSi MPA, Simeulue Island
<b>Country(ies)/territory(ies)</b>	Indonesia
<b>Lead organisation</b>	Fauna & Flora International
<b>Partner(s)</b>	Aceh Marine Fisheries Agency (DKP) Flora Fauna Aceh (Flona) Panglima Laot Syiah Kuala University
<b>Project leader</b>	Desi Wahyudi Gumay
<b>Report date and number (e.g. HYR3)</b>	HYR1
<b>Project website/blog/social media etc.</b>	N/A

**1. Outline progress over the last 6 months (April – Sept) against the agreed baseline timetable for the project (if your project has started less than 6 months ago, please report on the period since start up to end September).**

The project commenced in June 2019. Five villages have been identified for LMMA establishment and co-management; Kuala Baru, Kuala Makmur, Ujung Tinggi, Sambay and Pulau Bengkalak, with a population of around 3,279 based on primary data collection. The progress of the activities as below here:

**Output 1: By 2022, five coastal communities are engaged in co-management of new LMMA (Lhok) areas within PiSiSi MPA**

**Activity 1.1 Knowledge, Attitude and Practice (KAP) survey in Target Communities.**

The KAP (Knowledge, Attitude and Practice) survey was conducted between July 1<sup>st</sup> – 30 September in 5 Villages (Kuala Baru, Kuala Makmur, Ujung Tinggi, Sambay and Pulau Bengkalak) and 10 schools inside PiSiSi MPA, with the involvement of project partner Flona. KAP survey activities are shown in Figure 1.



Figure 1. KAP Survey

The KAP Survey assessed demography, influence of traditional institutions, ecological function, utilization of marine resources, conservation and communication channels for the 5 target villages (see *Appendix 1*). The total respondents was 334 (166 men and 168 women and 10% of the target village population,). The completion of the KAP survey report is now underway, and based on this, FFI will develop training packages with the involvement of village committees and teachers (**Activity 1.2**).

### **Activity 1.3. Formation of LMMA management committees headed by Panglima Laot**

The LMMA concept has been socialised to the fisher's communities and LMMA management committees have been established in the five target villages, headed by Panglima Laot. Details of committee structure are provided in *Appendix 2*. All committees agreed to cooperate in forming LMMAs based on a participatory planning process, in order to develop management planning of lhoks (traditional fishing areas) and customary law consensus. LMMA socialisations and committee meetings are shown in *Figure 2*.

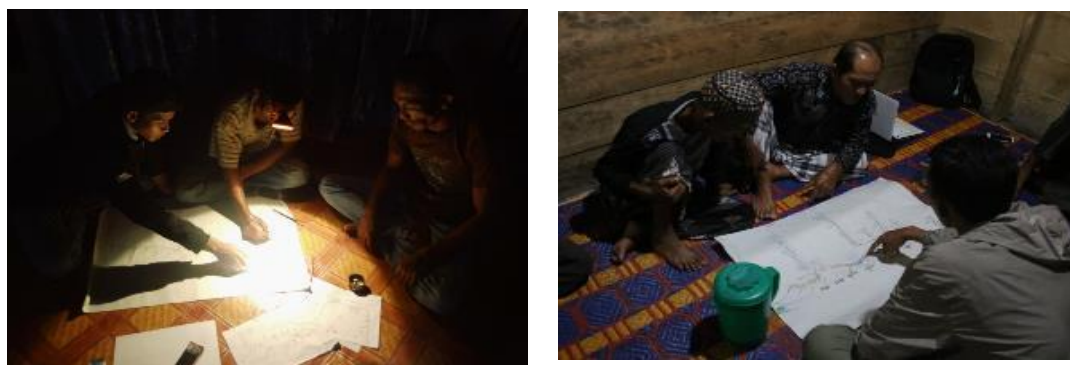


*Figure 2 Socialization LMMA concept and formation of LMMA management committee headed of Panglima Laot.*

In those forums in Pulau Bengkalak and Sambay, the head of the village also initiated the election of the new Panglima Laot, which had previously been inactive. The fisher's community were satisfied with the newly elected Panglima Laot and ready to maintain their LMMAs under the new formation (see *Appendix 2*).

### **Activity 1.4 Participatory Rural Appraisal (PRA) of traditional fishing areas, priority habitat and other factor influencing LMMA zonation and designation**

The Participatory Rural Appraisal (PRA) has been facilitated in the 5 target villages and the associated report is in process. Designed to inform LMMA design, the PRA facilitators guided the target village committees through historical profiles, historical transects, seasonal calendars, trend lines, system diagrams, problem trees and pair wise ranking in order to assess marine resource utilization. PRA activities are shown in *Figure 3*.



*Figure 3. Participatory Rural Appraisal in Target Villages*

**Output 2: Fishers, market actors and supporting organisations have improved understanding of the fisheries market system and collaborate to create equitable relationships within it.**

### **Activity 2.1. Participatory market mapping & action planning workshops**

Participatory Market System Development (PMSD) commenced with the preliminary survey of market actors. FFI assessed the basic information related to fisheries products, quality

control, market access and enabling environment in the five target villages. The surveys were implemented between September 30 and October 13, 2019. The data analysis is currently underway. PMSD initial surveys are shown in Figure 4.



Figure 4. Preliminary PMSD survey in 5 villages.

Once finished, FFI will identify the PMSD participants from the target villages and conduct the market literacy training (**Activity 2.1.**) and action planning workshops.

**Output 3: By 2022, coral reef fish biomass within the MPA has increased compared to 2018 baseline, with ecological data made accessible through the PiSiSi Atlas of Coastal Resources**

**Activity 3.1. Undertake reef resilience survey in new LMMA areas, MPA and surrounding areas**

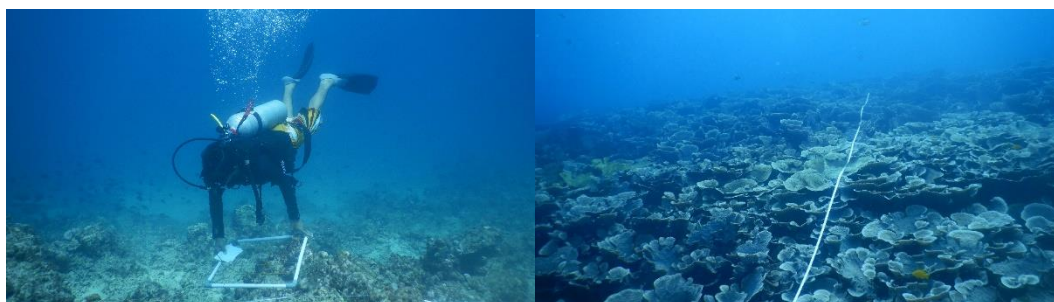


Figure 5. Resilience Survey

The reef resilience survey was conducted in the proposed new LMMA areas (based on traditional fishing grounds), the MPA and surrounding areas. The details of the survey results are shown below in Table 1, and photos are shown in Figure 5. This monitoring will provide a baseline and determine fish biomass changes inside the newly created LMMAs.

Table 1. Survey results in 5 LMMAs

Reference name	Abundance (ind/ha)	Biomass (kg/ha)	# Site	% Hard Coral	Category
Sambai	21.724	628,9	3	33,2	Moderate
Ujung Tinggi	18.036	547,2	1	11	Poor
Kuala Makmur	9.503	312,8	1	8,5	Poor
Kuala Baru	13.896	476,8	1	47,5	Moderate
Pulau Bengkalak	53.941	1.779,9	2	68,25	Good

**Activity 3.2. Spawning Aggregation (SPAG) Surveys in new LMMA areas**

In order to locate and quantify spawning populations of key economic target species, particularly grouper and snapper, FFI carried out SPAG surveys within LMMA areas. According to the survey, in the phase of the new moon, abundance of these species occurred in all of monitoring sites, indicating presence of spawning populations. Detailed SPAG survey data and analyses are provided in Appendix 4.

**Output 4: Marine resource governance actors in Simeulue and Aceh are empowered and motivated to co-manage LMMA and MPA networks in line with policy commitments**

**Activity 4.1 Preliminary analysis of resource governance stakeholders for PISISI MPA**

The stakeholder's analysis was started in June 2019. The project staff discussed the potential stakeholders throughout the 3 years' project implementation and connected them based on their roles and responsibility. 17 stakeholders were identified, and they will be engaged relevant to the project activities during the project implementation. Please see Appendix 5 for the full list of stakeholders. We will ensure the relevant stakeholders are involved in the projects approach, to strengthen cooperation between marine stakeholders. The strategy for stakeholder engagement consists of; preliminary visits / initial meetings, regular meetings, involvement in marine partnerships forum and taskforces. Stakeholder meetings are shown in Figure 6.



*Figure 6. Meetings and Forum Discussion with Stakeholders.*

**Activity 4.4 MPA & LMMA Networks Working Group Planning Process**

On August 26, 2019 the Marine and Fisheries Agency launched a series of Focus Group Discussions (FGD) for the establishment of a MPA conservation partnership in Aceh. This activity aims to map the relevant stakeholders and partners to support the Technical Unit of Marine Protected Areas Management Body that is to be established in November 2019. To execute this at district level, the marine and fisheries agency representative will conduct field visits to several locations in order to build the MPA & LMMA networks. For Simeulue, FFI will facilitate dialogue between LMMA representatives (Panglima Laot) in and the Marine and Fisheries Agency on 4 – 8 November 2019. A FGD is shown in Figure 7.



*Figure 7. Focus Group Discussion of Conservation Partnership*

- On October, 9 2019, the Marine and Fisheries Agency and FFI initiated to establish the LMMA networks in Simeulue District. The event attended by 30 participants from Panglima Laot bodies representing seven Simeulue villages. In addition, the Marine & Fisheries Agency, Navy and Police also supported this event and published the news as a mutual agreement. (see Appendix 3 and Figure 8).



Figure 8. Initial Discussion for Establishment of LMMAs (Lhok) networks in Simeulue

**2a. Give details of any notable problems or unexpected developments/lessons learnt that the project has encountered over the last 6 months. Explain what impact these could have on the project and whether the changes will affect the budget and timetable of project activities.**

**Activity 3.4 Uploading of data to the PISiSi database / coastal resources online database.**

In year-1, the preparation of technical unit for MPA management body is underway and this initially will be launched on November 2019. Linked to this, the PiSiSi Atlas of Coastal Resources (activity 3.4) will be implemented in Year-2 once the technical unit is active.

**2b. Have any of these issues been discussed with LTS International and if so, have changes been made to the original agreement?**

Discussed with LTS: No

Formal change request submitted: No

Received confirmation of change acceptance No

**3a. Do you currently expect to have any significant (e.g., more than £5,000) underspend in your budget for this year?**

Yes  No  Estimated underspend: £

**3b. If yes, then you need to consider your project budget needs carefully.** Please remember that any funds agreed for this financial year are only available to the project in this financial year.

If you anticipate a significant underspend because of justifiable changes within the project, please submit a rebudget Change Request as soon as possible. There is no guarantee that Defra will agree a rebudget so please ensure you have enough time to make appropriate changes if necessary.

**4. Are there any other issues you wish to raise relating to the project or to Darwin's management, monitoring, or financial procedures?**

N/A

If you were asked to provide a response to this year's annual report review with your next half year report, please attach your response to this document. Additionally, if you were funded under R25 and asked to provide further information by your first half year report, please attach your response as a separate document.

**Please note: Any planned modifications to your project schedule/workplan can be discussed in this report but **should also** be raised with LTS International through a Change Request. **Please DO NOT send these in the same email.****

Please send your **completed report by email** to [Darwin-Projects@ltsi.co.uk](mailto:Darwin-Projects@ltsi.co.uk). The report should be between 2-3 pages maximum. **Please state your project reference number in the header of your email message e.g. Subject: 25-035 Darwin Half Year Report**